

enchantment

The Voice of New Mexico's
Rural Electric Cooperatives

ROOSEVELT COUNTY
ELECTRIC COOPERATIVE

JUNE 2022

A Weekend With

The Kid

Page 14

Lincoln celebrates Billy the Kid Days
on August 5-7. Events include a
parade. PHOTO BY MYKE GROVES



Summer Lunch 2022

AVAILABLE POSITIONS

SITE DIRECTOR:

PASS OUT MEALS, CONTROLS LUNCH SITE AND COMPLETE PAPERWORK CORRECTLY DAILY. FIVE (4) IN THE GALLUP AREA. PLUS, ONLY ONE NEEDED AT RAMAH MID/HIGH SCHOOL. JUNE 6TH THROUGH THE 30TH 2022

DOCK:

FILL COOLERS WITH MILK AND LOAD TRUCKS WITH MEALS BY SITE. HELP IN THE KITCHEN AS NEEDED AND HELP CLEAN AS NEEDED. ONE (1) DOCK POSITION AVAILABLE AT MIYAMURA HIGH SCHOOL.

COOK HELPER:

PREPARES MEALS, CLEAN AND PREPARE FOR NEXT DAY MENU. MAY ALSO, SUB, AT LUNCH SITES. TWO (2) AT MIYAMURA HIGH SCHOOL.

COOK MANAGER:

OVERSEE, THE KITCHEN AND OTHER DUTIES AS ASSIGNED, COMPLETE PAPERWORK CORRECTLY DAILY

DRIVER:

DELIVER BREAKFAST AND LUNCH MEALS IN COOLERS TO THE SITES AND PICK THEM UP, AFTER MEALS HAVE BEEN SERVED. THEN RETURN COOLERS TO THE KITCHEN, WHERE YOU WILL SEPARATE THE LEFTOVERS AND PROPERLY DISPOSE OF UNUSABLE ITEMS. YOU ARE ALSO RESPONSIBLE FOR PICKING UP THE DAILY PAPERWORK FROM THE "SITE DIRECTORS". PLUS, HELP CLEAN THE COOLERS AS NEEDED. HELP PREPARE THE MEALS WHEN IN THE KITCHEN. MUST BE GMCS EMPLOYEE FOR INSURANCE PURPOSES. TWO (2) AT MIYAMURA HIGH SCHOOL.

DRIVER ASSISTANT:

ASSISTANT DRIVER WITH COOLERS. MAY ALSO BE ASSIGNED A SITE AS NEEDED

OTHER DUTIES MAY BE ASSIGNED TO ALL POSITIONS AS NEEDED.



THIS INSTITUTION IS AN EQUAL OPPORTUNITY PROVIDER

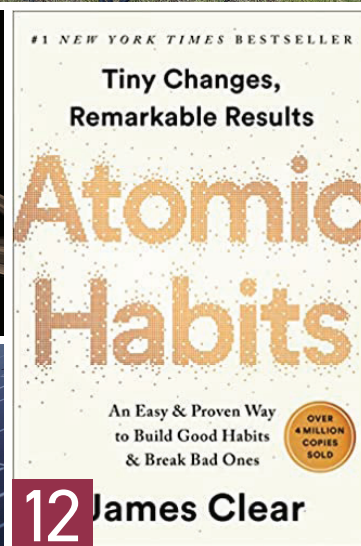
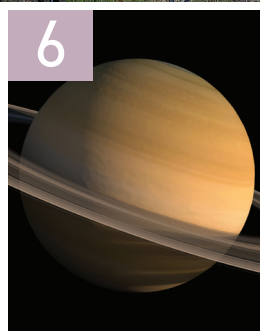
FOR MORE INFORMATION CALL CAROL BURNETT AT 505-879-7332
APPLICATIONS ARE AVAILABLE AT SSC, PLEASE SEE PEARL.



June
2022

CONTENTS

- 04 We Are enchantment
- 05 View From enchantment
- 06 Hale to the Stars
- 08 Enchanted Journeys:
A Festival of Dance
- 10 Energy Sense
- 12 Book Chat
- 14 A Weekend With the Kid
- 16 Your Electric Co-op
- 20 On the Menu
- 24 Ready, Set, Go:
Be Prepared for Wildfires
- 26 The Market Place
- 30 Youth Art



We live in the Land of Enchantment ...

We are *enchantment!*

Energy-Efficiency Tip of the Month

If you're looking to add smart technology to your home, consider smart plugs, which are an inexpensive way to control lighting and other electronic devices through a smartphone app. With smart plugs, you can conveniently manage lighting, home office equipment, video game consoles and more. Turning off unused devices can save you energy and money.

How to contact *enchantment*:



Phone
505-982-4671



Email
enchantment@nmelectric.coop

Facebook
facebook.com/enchantmentnmreca

Mail
614 Don Gaspar Ave.
Santa Fe, NM 87505

Community Events
events@nmelectric.coop

Display Ads
enchantmentads@nmelectric.coop

Book Chat Inquiries
enchantment@nmelectric.coop



**Take a photo of you holding
YOUR MAGAZINE AND WIN!**

Take a photo of yourself or someone else with the magazine and email it with a few words about the photo. Include your name, mailing address and co-op name.

One lucky member will win \$20. Submitting your photo(s) gives us permission to publish or post the photo(s) in *enchantment*, on Facebook and in other media outlets.

Email to: enchantment@nmelectric.coop

Congratulations to
Geneva Shuck, pictured
with her March 2022
edition of *enchantment*.
Geneva says she loves
getting the magazine,
and reading about local
businesses and places
around town.

**Central New Mexico
Electric Cooperative
member Geneva Shuck
wins \$20!**



enchantment

June 1, 2022 • Vol. 74, No. 6

USPS 175-880 • ISSN 0046-1946

enchantment (ISSN 0046-1946) is published monthly by the New Mexico Rural Electric Cooperative Association, 614 Don Gaspar Ave., Santa Fe, NM 87505. *enchantment* provides reliable, helpful information on rural living and energy use to electric cooperative members and customers.

More than 100,000 families and businesses receive *enchantment* magazine as electric cooperative members. Nonmember subscriptions are available at \$12 a year or \$18 for two years, payable to NMRECA. Allow four to eight weeks for first delivery.

PERIODICAL POSTAGE paid at Santa Fe, NM 87501-9998 and additional mailing offices.

CHANGE OF ADDRESS: Postmaster, please send address changes to 614 Don Gaspar Ave., Santa Fe, NM 87505-4428. Readers who receive the publication through their electric cooperative membership should report address changes to their local electric cooperative office.

THE NEW MEXICO RURAL ELECTRIC COOPERATIVE ASSOCIATION provides legislative and educational services to the cooperatives that are members of the association and deliver electric power to New Mexico's rural areas and small communities. The mission of the New Mexico Rural Electric Cooperative Association is to strengthen, support, unify and represent cooperative member interests at the local, state and national levels. Each cooperative has a representative on the association's board of directors, which controls the editorial content and advertising policy of *enchantment* through its Publications Committee.

OFFICERS OF THE BOARD OF DIRECTORS

Charles Pinson, president, Central Valley Electric Co-op, Artesia; Tim Morrow, vice president, Springer Electric Co-op, Springer; Duane Frost, secretary-treasurer, Central NM Electric Co-op, Mountainair.

BOARD OF DIRECTORS

Chris Martinez, Columbus Electric Co-op, Deming; Keith Gottlieb, Continental Divide Electric Co-op, Grants; Lance R. Adkins, Farmers' Electric Co-op, Clovis; Manny Bustos, Jemez Mountains Electric, Española; Robert Caudle, Lea County Electric Co-op, Lovington; James Ortiz, Mora-San Miguel Electric Cooperative, Mora; Thomas G. Rivas, Northern Rio Arriba Electric Co-op, Chama; Preston Stone, Otero County Electric Co-op, Cloudcroft; Antonio Sanchez Jr., Roosevelt County Electric Co-op, Portales; George Biel, Sierra Electric Co-op, Elephant Butte; Donald L. Wolberg, Socorro Electric Co-op, Socorro; Travis Sullivan, Southwestern Electric Co-op, Clayton; Wayne Connell, Tri-State G&T Association, Westminster, Colorado; Charles G. Wagner, Western Farmers Electric Co-op, Anadarko, Oklahoma.

NEW MEXICO RURAL ELECTRIC COOPERATIVE ASSOCIATION

614 Don Gaspar Ave. Phone: 505-982-4671
Santa Fe, NM 87505 Fax: 505-982-0153
nmelectric.coop enchantment.coop

Keven J. Groenewold, CEO, kgroenewold@nmelectric.coop
Tom Condit, director of communications, tcondit@nmelectric.coop

DISPLAY ADVERTISING: Rates available upon request. Co-op members and New Mexico display advertisers, email Shaylyn at enchantmentads@nmelectric.coop or call 505-252-2540. National representative: American MainStreet Publications, 800-626-1181.

Advertisements in *enchantment* are paid solicitations and are not endorsed by the publisher or the electric cooperatives that are members of the New Mexico Rural Electric Cooperative Association. **PRODUCT SATISFACTION AND DELIVERY RESPONSIBILITY LIE SOLELY WITH THE ADVERTISER.**

© 2022 New Mexico Rural Electric Cooperative Association Inc., in partnership with Pioneer Utility Resources. Reproduction prohibited without written permission of the publisher.



Always Looking Forward


This year marks the New Mexico Rural Electric Cooperative Association's 77th Annual Meeting. Our industry is rapidly changing, driven by rapid advancements in technology, greater member expectations, and changing rural demographics. Let us not forget world events that are affecting how we do business today and into the future. Supply chain disruptions have certainly affected our normal way of doing business and may continue to do so into the future.

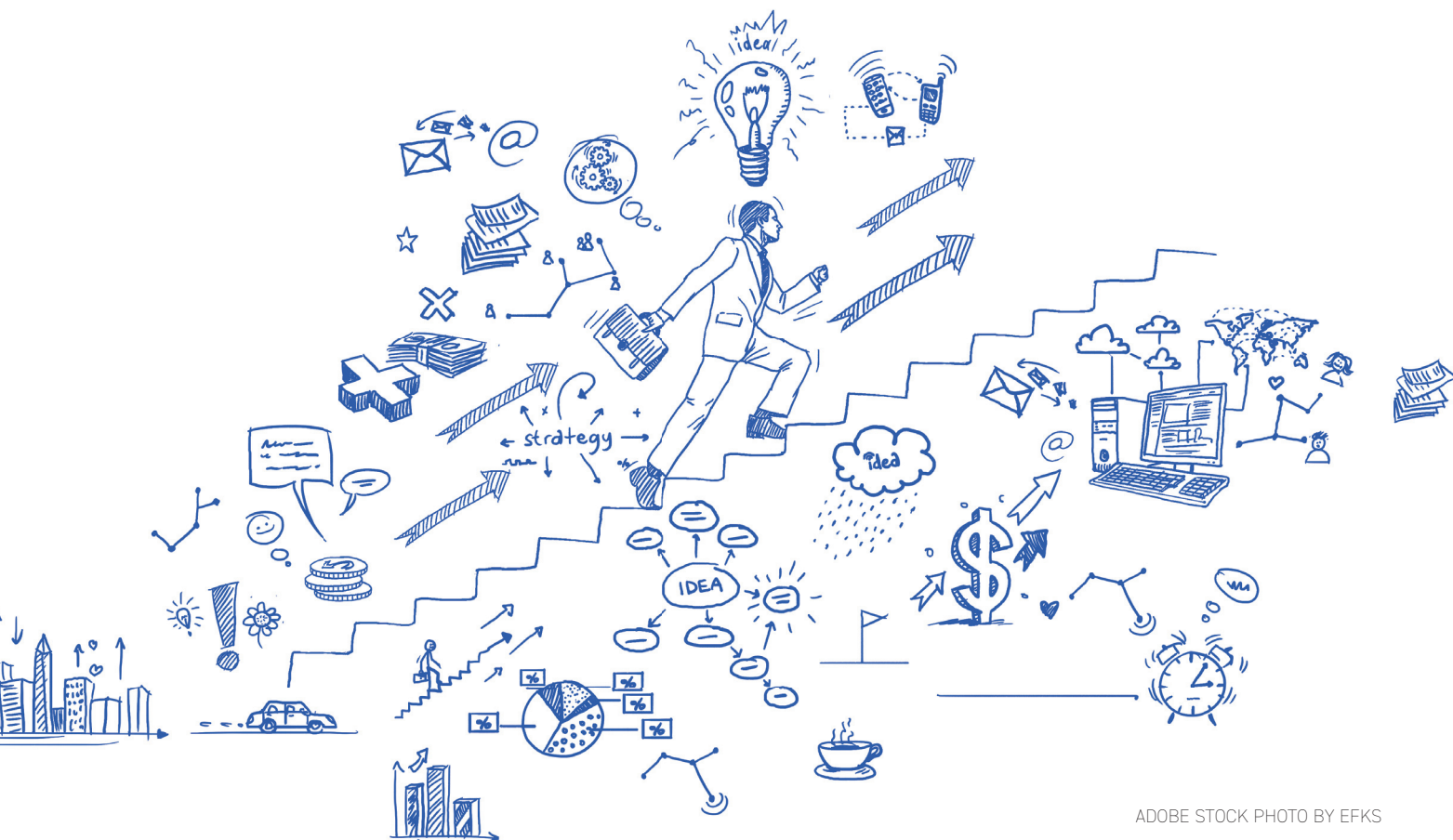
The price of distributed generation and utility-scale generation has declined the past few years. Many of your electric cooperatives recently entered into agreements that bring solar and wind resources to your communities. New Mexico's G&Ts have brought several large projects to market as well. All of these are based on economics. In 2025, 40%, and in 2030, 50% of total energy consumed by our members must be renewable—meaning zero carbon emissions. Our G&T power suppliers will meet these targets years in advance.

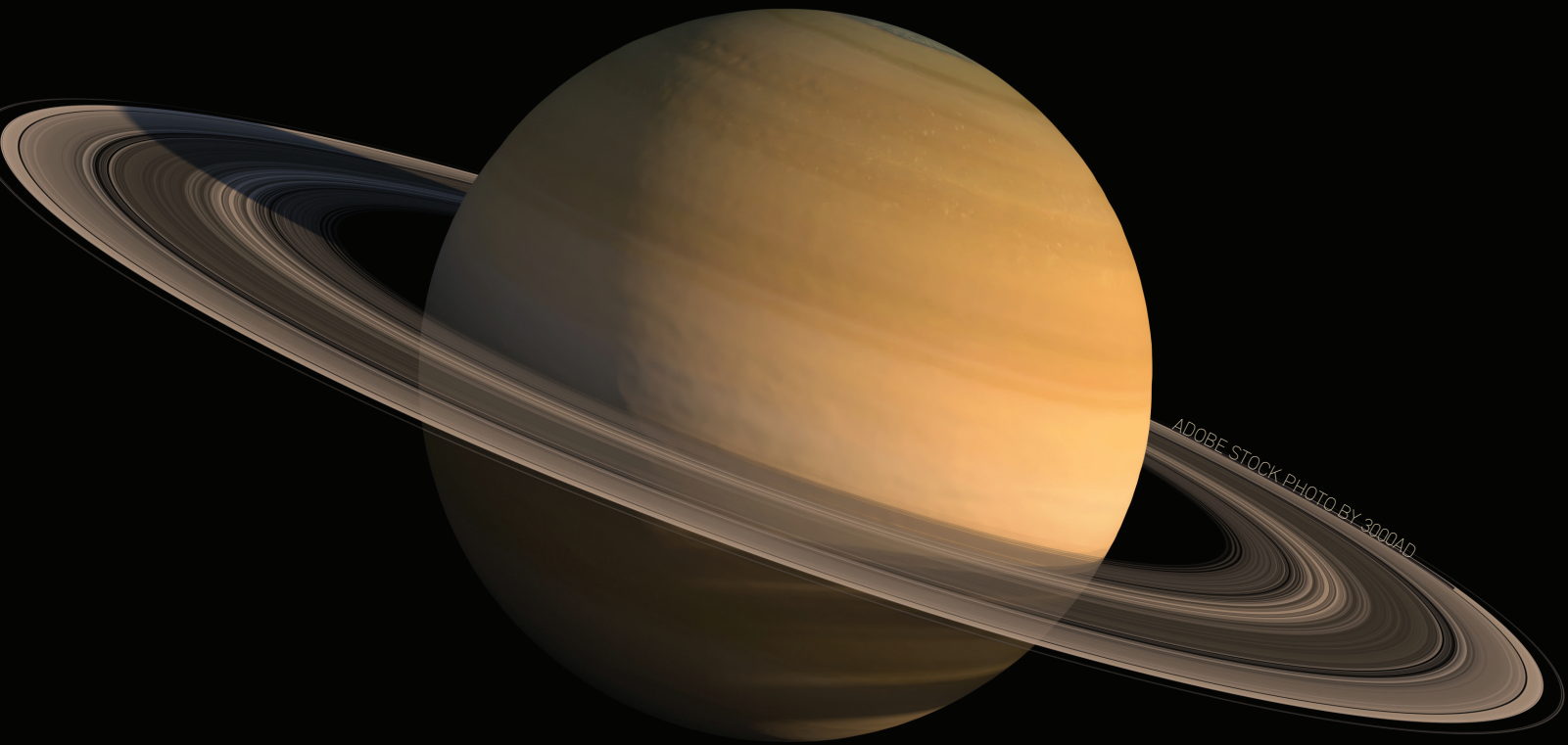
The new paradigm also puts a premium on items, such as

energy efficiency, and electric grid modernization and security. The efficient use of energy and distributed generation interconnection rules are forcing us to rethink our traditional rate structure. More efficient appliances and generation behind the meter forces co-ops in New Mexico and around the country to consider new rate designs. The end game is to preserve fair allocations of costs between members, protect the co-op's financial strength and give members more choices.

Meanwhile, cyberattacks are becoming more prevalent. The concerns of local and national policy leaders are focused on regional and national attacks. However, at the local level, we must remain vigilant to these attacks to protect member information and local grid security.

The challenges are daunting in this new world. We are confident that we will rise to meet these challenges. This is no longer the co-op our forebears envisioned when they embarked on the monumental task of electrifying rural New Mexico and the nation. 





Setting the Scene for Summer

A rather unique arrangement of planets will greet sky-watchers who are willing to be up in the hours before and during dawn this month.

The stage was set by the close conjunction between Mars and Jupiter late last month—as over the ensuing days and weeks Jupiter separates itself from the Red Planet and continues its more rapid climb into the morning sky.

Saturn already precedes Jupiter by about an hour and a half, and the brilliant Venus follows Mars by a similar interval. Starting a little before mid-month, Mercury also joins the show, being visible low above the horizon during dawn.

For a couple of weeks, all five bright planets will be simultaneously visible in the morning sky and in the same

order—looking east to west, or left to right—as their respective distances from the sun. This is the first time in almost a century that such a scene has presented itself. It will be almost another two decades before a similar occasion occurs.

As an extra bonus, on Friday morning, June 24, the crescent moon lies about halfway between Mars and Venus—perhaps acting as a substitute for Earth in the sky's current graphical representation of the solar system.

Although they require binoculars to be detected—and they're not in the in-to-out order defined by the bright planets' appearance—other important worlds of our solar system are also visible in the morning sky this month.

Uranus is slightly above Venus, between it and Mars, while Neptune is about a third

of the way from Jupiter to Saturn. The brightest asteroid, Vesta, travels through the constellation of Aquarius about halfway between Neptune and Saturn.

The comet mentioned near the end of last month's column appears to have disintegrated as it passed around the sun in late April, and thus did not put on the display we hoped might take place. This illustrates the uncertainty involved in predicting the behavior of any comet that visits the inner solar system.

We await the next bright comet that will grace our skies. It is possible one that was discovered in March by a California-based survey program and passes somewhat close to Earth next February may become bright enough to view with the unaided eye around that time. *e*

Make your home more comfortable than ever

“To you, it’s the **perfect lift chair**.
To me, it’s the **best sleep chair** I’ve ever had.”

— J. Fitzgerald, VA



You can’t always lie down in bed and sleep. Heartburn, cardiac problems, hip or back aches – and dozens of other ailments and worries. Those are the nights you’d give anything for a comfortable chair to sleep in: one that reclines to exactly the right degree, raises your feet and legs just where you want them, supports your head and shoulders properly, and operates at the touch of a button.

Our **Perfect Sleep Chair®** does all that and more. More than a chair or recliner, it’s designed to provide total comfort. **Choose your preferred heat and massage settings, for hours of soothing relaxation.** Reading or watching TV? Our chair’s recline technology allows you to pause the chair in an infinite number of settings. And best of all, it features a powerful lift mechanism that tilts the entire chair forward, making it easy to stand. You’ll love the other benefits, too. It helps with correct spinal alignment and promotes back pressure relief, to prevent back

and muscle pain. The overstuffed, oversized biscuit style back and unique seat design will cradle you in comfort. Generously filled, wide armrests provide enhanced arm support when sitting or reclining. **It even has a battery backup in case of a power outage.**

White glove delivery included in shipping charge. Professionals will deliver the chair to the exact spot in your home where you want it, unpack it, inspect it, test it, position it, and even carry the packaging away! You get your choice of Genuine Italian Leather, plush and durable Brisa™, stain and liquid repellent DuraLux™ with the classic leather look or plush MicroLux™ microfiber, all handcrafted in a variety of colors to fit any decor. **Call now!**

The Perfect Sleep Chair®
1-888-865-8224

Please mention code 117011 when ordering.

Also available in
Genuine
Italian
Leather



REMOTE CONTROLLED
EASILY SHIFTS FROM FLAT TO
A STAND-ASSIST POSITION

Now available in a variety
of colors, fabrics and sizes.
Footrests vary by model

Genuine Italian Leather
classic beauty & style



! New Brisa™
plush & durable



Long Lasting DuraLux™
stain & liquid repellent



MicroLux™ Microfiber
breathable & amazingly soft



Because each Perfect Sleep Chair is a made-to-order bedding product it cannot be returned, but if it arrives damaged or defective, at our option we will repair it or replace it. © 2022 Journey Health and Lifestyle



A Festival of Dance

The International Museum of Dance is launching IMOD ACTIVITIES in Santa Fe, New Mexico, for its first three-week festival, celebrating the rich cultures of dance in the Southwestern United States.


The Moving Southwest Festival will showcase the diversity and traditions of dances from the region. The festival runs June 27 to July 17. Locations include the New Mexico School for the Arts, Jean Cocteau Theater, Violet Crown Theater, SITE Santa Fe and Railyard Park.

In the warm climate of New Mexico, several traditions come together, reflecting the diverse terrain of the southwestern United States. From flamenco to African and Indigenous dances, the rich cultures of dance can now be enjoyed during the Moving Southwest Festival.

Attendees of all abilities and skill levels are encouraged to participate. Events feature 40 dance classes, five special performances, four to five lectures, two to three workshops, eight dance cinema screenings, and at least three dance parties and community builders. Attendees can enjoy movement and education in flamenco, body percussion, Contemporary, improvisation, ballet, African dance and drumming, Native land dance and hoop dance.

IMOD is proud to showcase artists and communities such as Emi Arts Flamenco, Jesus Munoz Flamenco, MOLODI, Patrizia Herminjard, William Miglino, Soriba and Shelley Fofana, Dancing Earth, Babatunji Johnson, Charmaine Butcher, Shandien Lrance and Earthseed Black Arts Alliance. The museum is also honored to work with film partners San Souci, San Francisco Film Festival and Cinedans.

An 15% early-bird discount is available for all ticket sales by using the code **EARLYBIRD15** at checkout.

VIP tickets will include three special events, and help support the Moving Southwest Festival now and in years to come. VIP options range from \$1,000 to \$10,000. 



**JUST
RELEASED**
NEW Coins for 2022



Your Silver Passport to Travel the World

The 5 Most Popular Pure Silver Coins on Earth in One Set

Travel the globe, without leaving home—with this set of the world's five most popular pure silver coins. Newly struck for 2022 in one troy ounce of fine silver, each coin will arrive in Brilliant Uncirculated (BU) condition. Your excursion includes stops in the United States, China, South Africa, Australia and Canada.

We've Done the Work for You with this Extraordinary 5-Pc. World Silver Coin Set

Each of these coins is recognized for its breathtaking beauty, and for its stability, even in unstable times, since each coin is backed by its government for weight, purity and legal tender value.

2022 American Silver Eagle: The Silver Eagle is the single most popular coin in the world. 2022 represents the first full year of release of the Silver Eagle's new Eagles Landing reverse design, introduced midway through last year to honor the coin's 35th anniversary. Struck in 99.9% fine silver at the U.S. Mint.

2022 South African Krugerrand: The Krugerrand continues to be the best-known, most respected numismatic coin brand in the world. 2022 is the 5th anniversary of the first silver Krugerrand. Struck in 99.9% fine silver at the South African Mint.

2022 China Silver Panda: Since its first issue, the China Panda coin series has been one of the most widely collected series ever, highlighted by one-year-only designs. This 2022 Panda features its first-ever privy mark honoring the coin's 40th anniversary. Struck in 99.9% fine silver at the China Mint.

2022 Australia Wedge Tailed Eagle: Introduced in 2014, the Wedge-Tailed Eagle is the first-ever collaboration between U.S. Mint designer John Mercanti and a foreign mint. With a new design for 2022, it's struck in 99.9% fine silver at the Perth Mint.

GovMint.com • 1300 Corporate Center Curve, Dept. WRD212-02, Eagan, MN 55121

GovMint.com* is a retail distributor of coin and currency issues and is not affiliated with the U.S. government. The collectible coin market is unregulated, highly speculative and involves risk. GovMint.com reserves the right to decline to consummate any sale, within its discretion, including due to pricing errors. Prices, facts, figures and populations deemed accurate as of the date of publication but may change significantly over time. All purchases are expressly conditioned upon your acceptance of GovMint.com's Terms and Conditions (www.govmint.com/terms-conditions or call 1-800-721-0320); to decline, return your purchase pursuant to GovMint.com's Return Policy. © 2022 GovMint.com. All rights reserved.

2022 Canada Maple Leaf: Since 1988, the Silver Maple Leaf's elegant design has made it a highly sought-after bullion coin. The 2022 coin features anti-counterfeit security technology—radial lines and a microengraved maple leaf with the number "22". Struck in 99.99% fine silver at the Royal Canadian Mint.

Exquisite Designs Struck in Precious Silver

These coins, with stunningly detailed designs and gorgeous finishes that speak to their country of origin, are sure to hold a revered place in your collection. Plus, they provide you with a unique way to stock up on precious fine silver. Here's a legacy you and your family will enjoy, and cherish. Secure yours now!

SAVE with this World Coin Set

You'll save both time and money on this world coin set with FREE shipping and a BONUS presentation case.



2022 World Silver 5-Coin Set \$199 + FREE SHIPPING

FREE SHIPPING: Limited time only. Product total over \$149 before taxes (if any). Standard domestic shipping only. Not valid on previous purchases.

For fastest service call today toll-free

1-888-201-7070

Offer Code WRD212-02

Please mention this code when you call.



SPECIAL CALL-IN ONLY OFFER

Not sold yet? To learn more, place your phone camera here >>> or visit govmint.com/WRD



Shedding Light on Home Solar Arrays

Q: I am considering a solar array on the roof of my home. What steps should I take with efficiency and energy savings in mind?

A: When I tell people I work in energy efficiency, one of the first responses I hear is, “Oh, I’m thinking about getting solar installed on my house.” I hear it sitting around campfires, meeting other parents at the park and riding to the airport.

Most people don’t realize solar is not energy efficiency. Solar is generating energy. Energy efficiency is finding ways to use less energy. But I can see the association because both are thought of as beneficial to the environment and ways to save money.

My follow-up question is, “What are your motivations for installing solar?”

In my experience, people are motivated by saving money, concern for the environment or both. Focusing first on energy efficiency addresses both motivations.

Here are some considerations for those interested in adding solar to a home:

Energy Consumption

Solar systems are sized based on a home’s energy use. The larger the system, the higher the cost.

Before installing solar, make sure your home is as efficient as possible. That means your home will use less energy and allow you to install a smaller solar system—which will save money and reduce your home’s

environmental impact.

Verify the efficiency of your lighting, HVAC systems and insulation. A fully insulated and air-sealed home uses less energy.

Affordability

Consider your out-of-pocket expenses. If something happens with the other equipment in your home, will you be able to afford to fix or replace it? For your heating and cooling system, the expected lifespan is 15 to 25 years. Check the age and condition of your HVAC equipment and consider the expenses of replacement.

Roofing

Consider the age, orientation and shade of your roof. It is more difficult—and expensive—to reroof a home with solar panels. Will the roof need to be replaced before the solar panels need to be replaced?

The best orientation for solar panels is south facing to receive direct light throughout the day. A shaded roof helps keep your home cool in the summertime but reduces solar energy production.

Maintenance

A solar system doesn’t last forever. Life spans range from 25 to 30 years. As systems degrade over time, they produce less energy. Maintenance and repairs may be needed.

Electric Bills and Storage

Solar is not “off the grid.” Unless you plan to disconnect from your electric utility, you will still receive a monthly bill.



A valuable step to take when considering solar is contacting your electric co-op to learn about solar offerings, rate structures and interconnection agreements. PHOTO BY MIKE TEEGARDEN/PIONEER UTILITY RESOURCES


Solar panels only produce power when the sun is shining. If you want power to your home at other times, such as after dark, you need to be connected to your electric utility or invest in battery storage. That comes at an additional cost.

During outages, don’t assume solar panels will supply you with power. Typical solar interconnection to the grid requires the panels to shut down during a power outage. This protects lineworkers from injury while making repairs.

Contact Your Electric Utility

Solar contractors often work in several utility service territories and may not be familiar with your utility’s offerings, rate structures and interconnection agreements.

Before signing an agreement, check with your electric utility for local information.

Understanding these considerations before installing solar will ensure you meet your money-saving and environmental goals. 

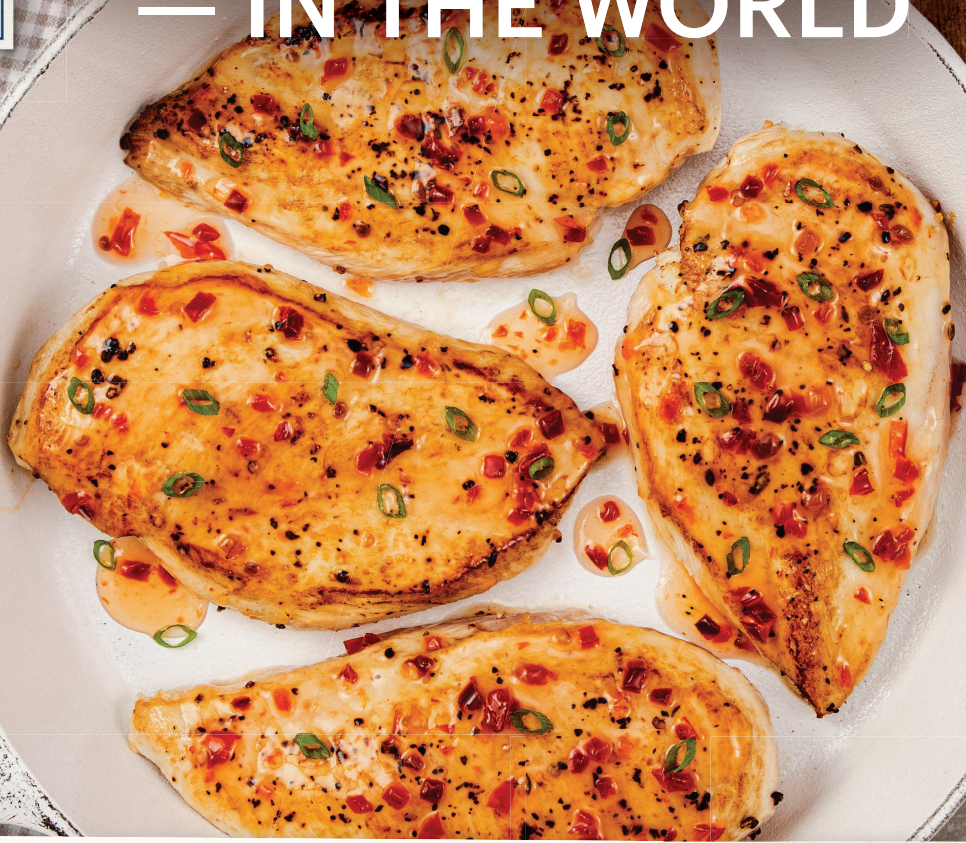


Miranda Boutelle has more than 20 years of experience helping people save energy. She has worked on energy-efficiency projects from the Midwest to the West Coast. Today, Miranda is director of operations and customer engagement at Efficiency Services Group in Oregon, a cooperatively owned energy-efficiency company.

This content was originally created by Efficiency Services Group LLC under contract with NRECA. NRECA retains ownership of this content. NRECA does not endorse Efficiency Services Group, its views herein expressed, nor any products or services it offers.



THE BEST TASTING CHICKEN — IN THE WORLD™ —



Best of PERDUE Sampler

(11+ lb.) 14+ lb. = **55+ Servings**

- 2 Trays – Diced Chicken Breasts (2.4 lb.)
- 2 Trays – Chicken Breast Strips (2.4 lb.)
- 2 Trays – Thin-Sliced Chicken Breasts (2.4 lb.)
- 1 Bag – Boneless Chicken Breasts (2 lb.)
- 1 Bag – Boneless Chicken Tenderloins (2.5 lb.)
- + 2 More Trays - Chicken Breast Strips **FREE**

**\$60
OFF**

~~\$139.90*~~ Separately

Your
Price

\$78.99

FREE SHIPPING

PLUS 2 More Trays

FREE STRIPS



Call

1.800.473.7383

Ask For

Perdue Box120

– OR –

www.PerdueFarms.com/perduebox120



No Antibiotics Ever

100% Veg Fed



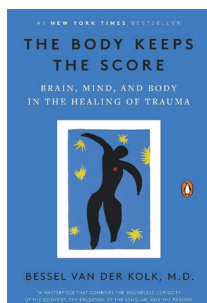
Guaranteed Quality

Home Delivery



Offer Expires 9/30/2022. Not valid with any other offers. *Savings shown based on total of single item base price. Free shipping available in select states. Limited one order per household. Valid for new customers only. Visit PerdueFarms.com or call 1.800.473.7383 for full Terms and Conditions.

*All pictures shown are for illustration purpose only. Product is frozen at peak freshness and carefully packaged in eco-friendly shipping materials to ensure safe delivery.



The Body Keeps the Score

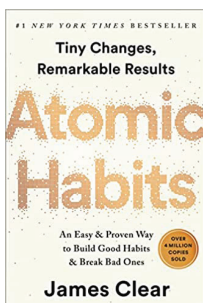
This book was written largely as a resource for mental health professionals and trauma survivors. It draws on Bessel van der Kolk's

30-plus years at the forefront of research and clinical practice.

Although I loathe refrains like, "now more than ever," it does seem reasonable to say here, that while trauma is a fact of human life, we are all sitting with, or closer to, trauma now than we were when the book first hit the press.

The promise in van der Kolk's book is big. It's the opportunity for children and adults to reclaim their lives by integrating brain science, attachment research and body awareness. Everyone I know who has read this book has found some utility in it.

By Bessel van der Kolk
Penguin Publishing Group
penguinrandomhouse.com



Atomic Habits

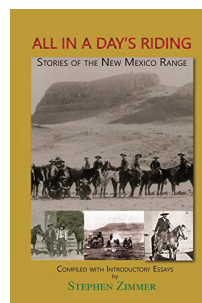
For its part, "Atomic Habits" hammers at another of our collective itches: personal progress. In this book, James Clear details a practical and useful framework

for realizing goals and carving out meaningful change by way of many small (atomic) adjustments.

The book's subtitle is "Tiny Changes, Remarkable Results," and it's tempting to think this book's best advice could probably be distilled into internet memes, such as the one I just pulled up: "You Don't Choose Your Future, You Choose Your Habits and Your Habits Choose Your Future."

So, I won't spend all my precious summer reading with the best sellers, but my time here will give me plenty to talk about at the summer gatherings I'm longing to attend.

By James Clear
Avery
jamesclear.com



All in a Day's Riding

Stephen Zimmer, a former director of museums at New Mexico's Philmont Scout Ranch, leans on his museum career and horsebacking heritage to compile a

compelling collection of recollections from the men and women of the Western cattle range.

These essays, most often written in a cowpuncher's twilight years, contain harrowing tales, yet are told with a tender affection that only time—and respite from the brutal conditions from which they came—can afford.

As Richard Irving Dodge wrote in 1882, "The daily life of the cowboy is so replete with privation, hardship, and danger that it is a marvel how any sane man can voluntarily assume it. Yet thousands of men not only do assume it, but actually like it to infatuation."

Isn't that so relatable? Don't we all reserve our deepest reverence for our most-suffering experiences? Of course, I much prefer to pore over the written account of hard knocks than to take any hits myself, which is why time and time again I go for the literature of the Wild West.

Whatever your summer fancy, read every page with gusto, and by all means, go for the genres, authors and themes that speak the loudest to you! Save the heavy lifts for darker days, shall we? In the season of summer reading, do yourself a solid and indulge your infatuations!

By Stephen Zimmer
Sunstone Press
sunstonepress.com

Book Review Requests

All book reviews are at the sole discretion of the book reviewer.

Submitting a book is not a guarantee it will be reviewed.

Send your book to:

ATTN: Book Chat
614 Don Gaspar Ave.
Santa Fe, NM 87505



ADOBE STOCK PHOTO BY MOTIZOVA



MUELLER METAL BUILDINGS



COUNT ON US FOR CUSTOM BUILDINGS

With Mueller, you have access to a wide range of high-quality steel buildings. We manufacture each building to meet your needs and deliver real value. Additionally, you can select from a variety of colors with limited paint warranties up to 40 years. Start designing your building today at www.muellerinc.com/3d-tool.



Learn more at: www.muellerinc.com
877-2-MUELLER (877-268-3553)

A Weekend With

The Kid

Lincoln celebrates Billy the Kid Days August 5-7

By Melody Groves

Billy the Kid rides his horse down Lincoln's Main Street waving to his many friends and admirers. He stops, leans down and shakes the hand of a youngster standing in awe of the famous gunfighter. Is he heading out of town for Fort Sumner to see his novia, Paulita Maxwell? Most likely not.

This is not 1881. The Billy astride the prancing sorrel is a modern-day reenactor portraying the legendary outlaw. Whether riding down the street or walking, stopping to chat with everyone he meets, he draws a crowd. Typical Billy.

It's not every day you walk down the street in Lincoln and see Billy the Kid coming the other way, riding a sturdy horse that surely could outrun any posse on his trail, or get to watch him escape

from the Lincoln County Courthouse.

But every August, a folk pageant in historic Lincoln provides a window of opportunity. Spend time in Lincoln—57 miles west of Roswell and 29 miles east of Ruidoso—during Billy the Kid Days and you're sure to find that outlaw socializing with his numerous friends, spinning a good yarn or dealing a quick game of poker. You can even meet him in person.

Billy the Kid Days runs August 5-7. Grab a bite from the food vendors, listen to live music, or buy locally made arts and crafts.

Be sure to take in the speakers: historians whose knowledge about Billy and the history of this community is vast.

Wild West gunfighters and military reenactors have shootouts a few times a day.

If that's not enough, a parade features locals and the central character.

Capping off a fun-filled day is "The Last Escape of Billy the Kid." Now in its 81st year, the family-friendly annual folk pageant centers around the life of the legendary outlaw, William H. Bonney.

Local reenactors portray important players in the notorious Lincoln County War, culminating with Billy the Kid's escape from the county courthouse on April 28, 1881. The pageant is in the arena next to the courthouse Friday and Saturday at 8:30 p.m. and Sunday at 3 p.m.

Tickets are available at the gate beginning at 10 a.m. each day. Admission is \$10 for adults, \$6 for kids 6-12 and free for kids younger than 6.

Originally, the play was performed in the streets of Lincoln where the conflict took place. Due to its wild success, the pageant turned into a yearly event. In 1950, the stage and sets were moved west of the original Lincoln County Courthouse on land donated by a member of the Coe

family. Cousins George and Frank Coe were close friends of Billy the Kid.

Explore where History Happened

Lincoln itself is soaked in history. Walk down the only street and breathe in the sights and sounds. Not much has changed since the first Hispanics moved into Bonita Valley around 1850.

The town of Lincoln—declared a historic site—is the most widely visited state monument in New Mexico. Through a gift from the Hubbard Family Trust, the historic site includes 17 structures and outbuildings, seven of which are open year-round and two more seasonally used as museums. Most of the buildings in the community are representative of the territorial style of adobe architecture in the American Southwest.

A visit to Lincoln wouldn't be complete without a tour of the old Lincoln County Courthouse. Walk up the same steps Billy and Deputies James Bell and Bob Olinger did 141 years ago. Look out the same window where Billy watched Olinger escort other prisoners for their last meals.

Now a museum, the courthouse contains exhibits recounting details of the Lincoln County War and the historic use of the building as a store, residence, Masonic Lodge, courthouse and jail.

Frozen in Time

Lincoln is a town made famous by one of the most violent periods in New Mexico history. Trace the events of the 1878 Lincoln County War through the courthouse and the Tunstall Store, which have a preserved 19th-century atmosphere.

The Tunstall Store contains original merchandise displayed on original shelving and in cases.

The Torreón is hard to miss. It's the tall, circular defensive rock tower on the east



Billy the Kid broke out of the Lincoln County Courthouse in 1881. PHOTO COURTESY OF MELODY GROVES



A parade is one of the many events Lincoln hosts during Billy the Kid Days in August. PHOTO BY MYKE GROVES

side of the road. Built by Hispanic settlers in the 1850s, it was used to defend against marauding Apaches. Early photos of the Torreón show it at the center of a plaza surrounded by a fence and houses. The plaza was part of a series of settlements known as Las Placitas del Rio Bonito.

San Juan Mission Church was built by local parishioners from 1885-1887 of adobes made on-site. The vigas—wooden beams in adobe architecture—were hauled from the nearby Capitan Mountains. As then, the church remains the center of the community. It is within these historic walls that most of the speakers give presentations about Lincoln and Billy.

Continue your walk through history by visiting the Convento. Built before 1868, this was the first courthouse. It also served as a saloon, dance hall and community center. Eventually, it housed nuns who conducted summer classes.

Dr. Woods' House, built from 1882-83, opened as a furniture store, then became a newspaper office, boarding house and saddle shop, all before namesake Earl Woods made it his home in 1926.

The 1868 Montañó store housed McSween supporters during the Lincoln County War. Gov. Lew Wallace stayed there several nights while trying to arrange secret meetings with Billy the Kid. It operated for 30 years after the Civil War.

The Anderson-Freeman Visitor's Center and Museum features historical exhibits in

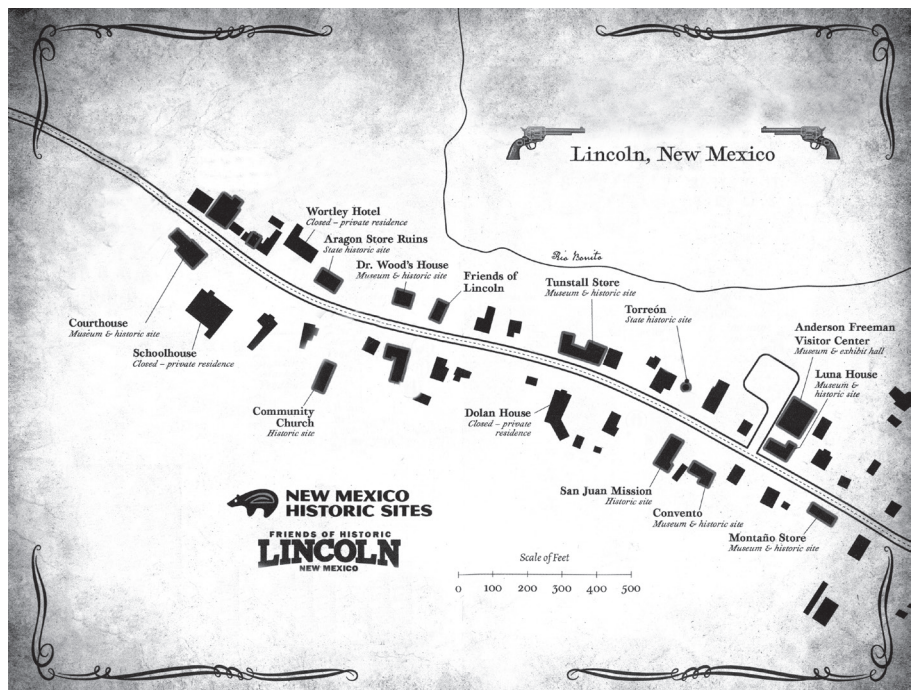
a timeline starting with American Indian prehistory and ending with the Lincoln County War. A 22-minute video about the Lincoln County War and the community is shown every half hour.

These Lincoln historic adobe and stone buildings are preserved as they were in the late 1800s and represent the factions involved in the Lincoln County War.

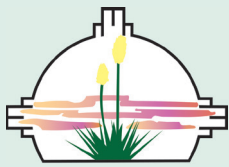
When you walk the street, you literally walk in the footsteps of many men: Sheriff

Pat Garrett, who shot Billy the Kid; Billy's friend and mentor, John Tunstall; Lincoln Sheriff William Brady; businessman Jimmy Dolan; cattleman John Chisum; lawyer Alexander McSween; Billy's steadfast friends, Charlie Bowdre and Tom Folliard; and, of course, Billy the Kid.

If you stop and listen, you might hear them walking next to you. 🎧



Visit the many sites on Lincoln's Main Street. PHOTO COURTESY OF FRIENDS OF HISTORIC LINCOLN



A Touchstone Energy® Cooperative

Interim General Manager
Jerry Partin

Address
121 N. Main St.
Portales, NM 88310

Telephone
575-356-4491

Fax
575-359-1651

After Hours
575-356-4492

Email
rcec@rcec.coop

Website
www.rcec.coop

Office Hours
8 a.m. to 5 p.m. (M-F)
Roosevelt County Electric Cooperative is an equal opportunity provider and employer.

Board of Trustees

President
Gene Creighton, Position 3

Vice President
Janet Collins, Position 1

Secretary-Treasurer
Chris Duncan,
Position 6, At-Large

Leon Nall
Position 2

Charles Bennett Jr.
Position 4

Brandon Dewbre
Position 5

Billy Cathey
Position 7, At-Large

Board Meeting

The Board of Trustees meets the fourth Tuesday of the month at 9 a.m. in the cooperative boardroom.

Robert Montoya Jr. Receives Long Rope Safety Attitude Award

Robert Montoya is the 2022 recipient of Roosevelt County Electric Cooperative's Long Rope Safety Attitude Award. The award is dedicated to all lineworkers in New Mexico who have been killed or injured on the job. The award recognizes an employee at each co-op who excels in safety. Robert began at RCEC in 2003 as a groundman and advanced to lineworker in 2017. Robert always conducts a thorough tailgate discussion, communicates well and is observant at every jobsite. He takes time to explain things if a co-worker doesn't understand the task. He never cuts corners, knows what is right and will do it by the book even when it makes the job take longer. Robert genuinely cares for his coworkers and is looked up to by his peers. He leads by example and has a great attitude toward his job. He can bring laughter and comedy when it is needed most.

Robert is knowledgeable about RCEC's line department, so most of his coworkers, including senior lineworkers, take his ideas and thoughts into consideration. All these valuable qualities make Robert one of the top leaders at RCEC. He was nominated for this award by his coworkers, and was submitted to the NMRECA statewide office for consideration among other nominees from across the state. This is the second time Robert was nominated by his peers to receive this award. He first received this award in 2012 and was chosen at the statewide level that year as well.



RCEC Lineman Robert Montoya Jr., left, receives the Long Rope Safety Award from Tillman Stevens, RCEC safety/loss control.

Call 811 Before You Dig

As the weather improves, many of our customers will undertake outdoor projects. Roosevelt County Electric Cooperative reminds you to use caution while you work outdoors, especially around power lines. Overhead and underground power lines can pose a danger. 811, the national Call Before You Dig number, was created to help protect you from unintentionally hitting underground utility lines while working on digging projects. Failing to call 811 and making risky assumptions can be life-threatening.

Every digging job requires a call—even small projects such as planting trees or shrubs. If you hit an underground utility line while digging, you can harm yourself or those around you, disrupt service to an entire neighborhood and potentially be responsible for large fines and repair costs.

One call to 811 automatically notifies electric utilities, natural gas providers and communication providers who may have underground lines at your work site. Utility personnel will mark or stake the horizontal path of their underground facilities, provide information about or give clearance to dig.

This simple service protects you from personal injury and protects underground facilities from being damaged. You can also visit www.call811.com.

June Job
Anniversaries
Clint Walker, 23 years



RCEC's Environmental, Social and Governance Performance

Environmental, social and governance criteria are of increasing interest to companies, their investors and other stakeholders. With growing concern about the ethical status of for-profit businesses, these standards are the central factors that measure the ethical impact and sustainability of investment in a company. RCEC is a member-owned cooperative and does its best to support and give back to its community.

Environmental

RCEC strives to minimize its impact to the environment by complying with the Energy Transition Act's renewable portfolio standards. In 2021, 38.3% of RCEC's energy sales to members were generated from renewable resources. RCEC's current requirement is 10%, making this total well above this minimum. In 2025, the requirement changes to 40%. RCEC intends to reach this standard earlier than required.

RCEC strives to comply with state and federal environmental, health and safety regulations in varying areas, including polychlorinated biphenyl management and spill prevention, control and countermeasure plans.

RCEC has an avian protection plan in place that confirms our commitment to work cooperatively toward the protection of migratory birds. This includes a commitment by RCEC to balance its goal of providing reliable electrical service in a cost-effective manner with the regulatory requirements protecting avian species, as well as the need to obtain and comply with all necessary permits, monitor incidents of avian mortality, and make reasonable efforts to construct and alter infrastructure to reduce avian mortality.

Social

RCEC supports and helps to improve the communities we serve and live in. The Seventh Cooperative Principle, Concern

for Community, says cooperatives work for the sustainable development of their communities through policies supported by the membership.

The most important thing RCEC does for the communities it serves is provide them with safe, reliable and affordable electricity. This is the foundation of the rural economies we serve and it helps our members remain operational.

Additionally, RCEC provides loan funds through a revolving program that began back in 1994. RCEC's Board of Trustees recognized that without a strong local economy, the cooperative would not be able to maintain steady growth and continue to be successful. The Board directed management to use the rural development program through the United States Department of Agriculture. These loans and grants are geared toward projects designed to benefit the entire community by improving community services or infrastructure and enhance economic development and job creation projects in rural areas.

To date, RCEC has obtained funding to make six loans totaling \$1,706,000. These loans assisted development and construction activities for a milk processing plant, a hospital, a peanut plant and a peanut butter plant.

RCEC and its Board of Trustees also believe in supporting our youth and have successfully given 756 students a total of \$1,119,600 in scholarships to further their education. These funds come from donations, unclaimed capital credits and contributions from CoBank, a national cooperative bank that graciously contributes through its annual Sharing Success Program.

RCEC believes in energy conservation so much that it has made 120 energy conservation loans to its qualifying members, totaling \$1,224,576.64. These loans are available at 3% interest for up

to \$25,000 for a term of 120 months. The loans can be used for a variety of energy conservation measures, and most commonly are requested for heat pumps, windows and doors.

Governance

RCEC is a cooperative, owned by the members it serves. RCEC has been member-owned and -led for 82 years.

RCEC is a democratic organization, controlled by members—through the Board of Trustees, who actively participate in setting policies and making decisions. Members have equal voting rights: one member, one vote. RCEC's mission statement—"to provide safe, reliable and affordable electrical service to the members we serve"—drives its cooperative decisions.

RCEC's management and board participate in strategic planning, through which goals are created to ensure the sustainability of the organization. Within this planning session, the cooperative's strengths, weaknesses, opportunities and threats are discussed and goals are created to improve our organization as a whole.

Results of 2022 Annual Meeting

On April 18 members elected the following trustees:

Leon Nall, Position 2; Brandon Dewbre, Position 5; Billy Cathey, Position 7 At-Large.

The 2023 Nominating Committee members and alternates were elected as submitted.

Scholarships were awarded to 14 graduating high school seniors and 28 returning college students. Nine elementary students were recognized for their participation in the annual electrical safety coloring contest.



UPGRADE TO ELECTRICITY AND SAVE IN YOUR HOME

Make the switch to electricity and keep money in your pocket with more efficient household appliances and systems. From heat pumps to electric vehicles, these proven technologies have the potential to run your home and life more simply, efficiently and cost-effectively.

LEARN MORE AT WWW.TRISTATE.COOP/BE

Tri-State is a not-for-profit power supplier to cooperatives and public power districts in Colorado, Nebraska, New Mexico and Wyoming.



TRI-STATE

A Touchstone Energy® Cooperative





YOUR HOME, ELECTRIFIED

HEATING & COOLING WITH HEAT PUMPS

According to the U.S. Department of Energy, when paired with proper insulation, an electric heat pump can save over 30 percent on your heating and cooling bills compared to conventional HVAC systems. Here are some advantages of a heat pump:

- One system to heat your home (even in sub-zero temperatures) and cool during warmer months
- Eliminate potential carbon monoxide exposure from combustion byproducts
- Costs substantially less to heat your home than propane or electric baseboard heat

POWER UP YOUR GARDENING TOOLS

Electric garden tools can last longer and are emissions-free, meaning you'll smell the scents of summer, not the smell of exhaust. Plus, with modern technology, they are just as effective as gas-powered alternatives. Just charge the battery and go!

- Low maintenance – no oil changes or need to treat fuel, change spark plugs or filters.
- No need to purchase and store gasoline
- Electric models are lightweight and easy to handle

SAVE WITH AN ELECTRIC VEHICLE (EV)

Sales of light-duty electric vehicles rose by 43% in 2020. On average, EVs have a lower cost of operation over their lifespan, and buyers are taking notice.

- Less maintenance
- Increased savings compared to gasoline
- Fun to drive because of torque

REBATES FOR YOUR HOME

Contact your local electric co-op or public power district to find out more on available rebates and incentives

Gather for Fun and Food

Summer evenings beg for outdoor dining. Whether on a deck or patio, in a nearby park or simply on a blanket on the grass, enjoy cooler evening temperatures with those you love. Even though our recipes this month require a bit of kitchen time, leave the hot kitchen behind once the food is ready and find an outdoor place to enjoy. Both recipes are easily covered and transported to any place where family and friends gather.

Find a mountain vista, rich ranchland, wilderness walk or simply a park table, take time to experience our great Land of Enchantment.

Chicken Marinara

6 teaspoons canola oil	1 teaspoon salt
4 large boneless, skinless chicken breasts	1 teaspoon pepper
1 sleeve saltine crackers, finely crushed	2 eggs
1 cup flour	3 cups milk, divided
½ cup Parmesan cheese	24 ounces marinara sauce
	4 slices provolone cheese

Heat oven to 375 F.

Combine crackers, flour, Parmesan cheese, salt, and pepper in a shallow bowl. Whisk eggs and 1 ½ cups milk in a second shallow bowl.

Heat canola oil in a large, heavy skillet.

Dip chicken breasts first in egg mixture, then in cracker mixture. Repeat steps, then place chicken in the skillet. Brown chicken slightly on both sides.

Prepare a 9-by-13-inch baking dish with cooking spray. Whisk together the remaining 1 ½ cups milk and marinara sauce. Pour mixture into dish.

Place browned chicken breasts on top of marinara sauce. Top with one slice of cheese.

Cover dish with foil and bake for 40 minutes.

Uncover dish and return to oven for 5 to 10 minutes, or until cheese begins to brown.

Serve over mashed potatoes or cooked pasta of choice.



Lemon Cheesecake Tart

1 box lemon bar mix	3 eggs
20 prepared lemon-flavored cookies of choice	8 ounces cream cheese, softened
½ cup water	8 ounces whipped topping, thawed
3 tablespoons butter, melted	1 cup powdered sugar
	1 lemon zested, juiced

Heat oven to 350 F.

In a food processor, pulse cookies until fine crumbs form. Add crust mix into a blender and drizzle in melted butter. Pulse until crumbs are moistened.

Prepare a tart pan (an 8-by-8-inch baking dish may be used) with butter-flavored cooking spray.

Spread crust mix over the bottom of the pan, pressing down. Bake for 20 minutes.

While the crust is baking, whisk together lemon bar filling per box directions, using water and eggs. Whisk in lemon juice.

After the crust is baked, spread lemon filling over warm crust and return to oven. Bake for 25 to 30 minutes until filling no longer wiggles.

Cool on a wire rack until completely cool.

In a medium bowl, mix cream cheese until soft. Add powdered sugar until smooth. Stir in whipped topping.

Spread cheesecake topping on the cooled tart and sprinkle with lemon zest. Refrigerate until served.



Sue Hutchison was born and raised a block from the freeway in Southern California. She had an early start with industrial, large-scale cooking before age 20. She's always been both a beach bum and at home in the kitchen, where she enjoys making new creations.

UNIDENTIFIED FOOD INVESTIGATORS

With the slogan “good home cooking,” Big Daddy’s Diner is “9,000 feet above the stress level” in Cloudcroft. The restaurant was intriguing to the UFI team—enchantment’s restaurant reviewers—and the team was not disappointed.

Denise and Ryan Lossette became proud owners of the Diner in January. The diner first opened in 2004, and the Lossettes brought in new cuisine to add to its menu of classics.

“We are updating the diner and our website to bring a new look and feel but want to keep the diner’s classics by returning to the original recipes,” Lossette says.

A UFI team member was impressed by the Mountain Man Breakfast consisting of two biscuits, two eggs, two pieces of either bacon or sausage, and hash browns smothered in country gravy, saying, “The gravy can’t be beat, and those biscuits were sensational.”

Soon-to-be favorites such as skirt steak street tacos and the Henny Penny wing basket with the choice of Buffalo, Nashville hot, garlic Parmesan or sweet chile sauce are sure to be a hit.

“We’re offering great food in a family diner and are always looking for hard workers to join our team” Lossette says.

Visit the diner at 1705 James Canyon/Highway 82, or call 575 682-1224. A new website will soon launch at bigdaddysdinercloudcroft.com



Beware: The UFI team may strike near you! Watch for the next enchantment installment to highlight New Mexico’s finest local eateries. Feel free to recommend future spots for the team to investigate.

CLOCKWISE, FROM TOP:
Big Daddy’s Diner owners Ryan and Denise Lossette. The diner’s skirt steak street tacos are favorites. The UFI team liked the Mountain Man Breakfast.



BACKGROUND PHOTO
COURTESY OF NASA/JPL-
CALTECH/UCLA



CULTURE •

COMMUNITY •

CONNECTION •

MUSEUM • CAFE • BOOKSTORE



The Train Station!

Beginning May 2, 2022

SUMMER INDIGENOUS DANCE PROGRAM

Dances-Demonstrators-Vendors

MONDAYS ♦ WEDNESDAYS ♦ FRIDAYS

7:00-8:00 PM *(In front of the station)*

201 E. HISTORIC HIGHWAY 66
GALLUP, NEW MEXICO

505•728•8048

gallupculturalcenter.org



RECHARGEABLE Digital Hearing Aid

BUY 1
GET 1

FREE

NEW LOW
PRICE

REG. \$299.98

ONLY
\$149⁹⁹

Each When You Buy a Pair

PLUS FREE SHIPPING
Limited Time Only!



How can a rechargeable hearing aid that costs only \$149⁹⁹ be every bit as good as one that sells for \$2,400 or more?

The answer: Although tremendous strides have been made in Hearing Aid Technology, those cost reductions have not been passed on to you. Until now...

The MDHearingAid® VOLT uses the same kind of technology incorporated into hearing aids that cost thousands more at a small fraction of the price.

Over 600,000 satisfied MDHearingAid customers agree: High-quality, digital, FDA-registered **rechargeable** hearing aids don't have to cost a fortune. The fact is, you don't need to spend thousands for a hearing aid. MDHearingAid is a medical-grade, digital, rechargeable hearing aid offering sophistication and high performance; and works right out of the box with no time-consuming "adjustment" appointments. You can contact a licensed hearing specialist conveniently online or by phone — even after your purchase at no cost. No other company provides such extensive support. Now that you know...why pay more?

"I was amazed! Sounds I hadn't heard in years came back to me!"

— Don W., Sherman, TX

CHARGE AT NIGHT **AND GO** ALL DAY

**NEVER
CHANGE
A BATTERY
AGAIN!**



Carrying case is also the charger.

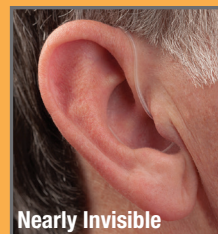
45-DAY RISK-FREE TRIAL!

If you are not completely satisfied with your MDHearingAids, return them within 45 days for a FULL REFUND!

For the Lowest Price Call

1-800-965-1459

www.MDVolt.com



Nearly Invisible

Use Code **SR11**
and get **FREE** Shipping

MDHearingAid®

DOCTOR DESIGNED | AUDIOLOGIST TESTED | FDA REGISTERED



Proudly assembled
in America!





The Ready, Set, Go! Program is the result of a nationwide discussion on how to protect homes and lives in what the fire service calls the wildland urban interface.

WUI is where development meets natural vegetation and the ember zone. An ember zone is an area where the wind-driven ember fallout from a wildland fire can threaten property and lives.

The program works collaboratively with defensible space education programs and provides tools for the fire service to educate individuals on preparedness, situational awareness when a fire starts, and how to act early for the safety of your family and emergency responders.

Ready, Set, Go! seeks to share information with residents on how to successfully prepare for a wildland fire. Speak with your local fire department about your area's threat for wildland fire and learn more about the WUI.

Fire season is an increasing threat and a year-round reality in many areas. Do your part to be prepared. Follow these simple steps:

- **Ready.** Take personal responsibility and prepare long before the threat of a wildland fire so your home is ready. Create defensible space by clearing brush away from your home. Use fire-resistant landscaping and harden your home with fire-safe construction measures. Create your personal Wildfire Action Plan.

- Assemble emergency supplies and belongings in a safe place.

- Plan escape routes and make sure all those residing within the home know the plan of action and practice it regularly.

- **Set.** Be aware of the situation. Pack your emergency items. Stay aware of the latest news and information on the fire from local media, your local fire department, and public safety.

- **Go.** Act early! Follow your personal Wildfire Action Plan. Doing so will not only support your safety but allow emergency responders to best maneuver resources to combat the fire.


In a recent press release, Gov. Lujan Grisham said, "Fire conditions across New Mexico remain extremely dangerous. It's essential that we mitigate potential wildfires

by removing as much risk as possible."

Most of New Mexico's public land agencies, including the U.S. Forest Service, Bureau of Land Management, State Land Office and State Forestry Division, have implemented fire restrictions that include bans on wood and charcoal fires including campfires. Fireworks are also prohibited on public lands.

Don't let the first time you educate yourself on wildland fire be in the aftermath, join with us and be a part of the wildland fire solution today!

Contact Your Local Fire Department for more information on the Ready, Set, Go! Program. Many fire departments are using Ready, Set, Go! in their notices of evacuations.

For fire updates, please see the NMRECA Facebook page at <https://facebook.com/nmreca>. 

Download your wildland fire action guide at https://www.emnrd.nm.gov/sfd/wp-content/uploads/sites/4/FINAL-new-mexico-RSG-guide-2017_000.pdf

J & J AUCTIONEERS
www.jandjauction.com
 575-485-2508

Albuquerque Area Truck & Equipment Auction



Saturday July 23rd, 2022 at 8:30am
 7700 Reading Ave SE ~ Albuquerque NM

FEATURING:
 HEAVY EQUIPMENT, FARM EQUIPMENT, CARS, TRUCKS, TRAILERS, ATVS, AGRICULTURAL EQUIPMENT, ATTACHMENTS, AND MUCH MORE!

We are now accepting consignments for this auction. Contact one of our salesmen

JOE 575-447-2508
 JOHN 505-617-0799
 ROLAND 505-617-5345

Check our website for more info and upcoming auctions!!


3 J's Plumbing & Heating, Inc.

- ▶ High Efficiency Cooling/Heating Specialists
- ▶ New Installations/Repairs
- ▶ AC Conversations
- ▶ Tankless Water Heater Installs

Call: 505-270-4363
 Visit: www.3jsplumbing.com


Rik Thompson
 Realtor
Farm & Ranch Specialist
 505-350-3598
rik@republicranches.com

As a Cattleman, I Understand the Farm and Ranch Business

Republic Ranches, LLC
 210-416-2737

— BUYING —
OLD INDIAN ITEMS
 303-888-2103
carnold21@gmail.com

Advertise in
enchantment



enchantmentads@nmelectric.coop

FAST, RELIABLE INTERNET

Residential Internet Plans include:

- 24x7 dedicated support!
- UNLIMITED data download!
- 5 email accounts!
- Private IP address!
- Wireless router

SPECIAL PROMO*
 Free Install with a One-Year Term

 **866.215.5333**
TWNCOMM.COM

TWN Communications serves the following cities: Deming, Edgewood, Elephant Butte, Las Cruces, Maxwell, Moriarty, Mountainair, Raton, Sandia Park, Silver City, Socorro, Springer, Truth or Consequences, and many of their surrounding communities.



*Services provided by TWN Communications. Not available in all areas. With approved credit. Restrictions, terms, and conditions apply. Taxes, regulatory, installation/activation, surcharges and other charges not included. Call for details or visit www.twncomm.com or for additional information and for terms and conditions of services. Customers on qualifying Internet plans may receive maximum download speeds ranging from 1.5 Mbps to 15.0 Mbps. Actual download speeds will vary. TWN Phone not available with satellite internet. Minimum 512 Kbps Internet connection speed required. International call rates apply. Unlimited calling applies to local and long distance calls within the contiguous United States. Digital Phone 911 Service operates differently than traditional 911. See www.twncomm.com/regulatory-compliance/ for information. Unlimited usage subject to "fair and normal" usage limitations as described in terms and conditions. Offer expires December 31, 2022. Free installation available on a one-year term Internet plan. Certain terms and conditions apply. Offer available for new customers. 032122_TWN NM Country Market Spring 7.25x4.75



THE MARKET PLACE

Animals

NOT ALL WATER TANKS ARE CREATED EQUAL! Are quality, value and longevity important to you? Buy high specific gravity, heavyweight, long warranty, superior black NRCS tanks. Lowest prices only provide minimum standards, lower weights and shorter warranties. Find out more! 575-430-1010.

NEW MEXICO DRINKING WATER STORAGE TANKS, heavy-duty black poly. Fittings customized to your needs. NRCS and EQUIP approved. High specific gravity, heavyweight, long warranty, algae resistant, black NRCS water tanks. Call 800-603-8272 or 575-682-2308.

RABBITS, ALL AGES AND SIZES. For pets, show, meat, fur. Polish, New Zealand, Californians. Cages, feeders, door latches, urine and wire guards. Call Gene at 505-906-1291 in Jamestown, New Mexico, at The Bunny Farm. All calls will be answered.

SADDLES AND TACK. Everything for the horse. Western & English tack bought and sold. Rancho Elisa Stables LLC, 500 Route 66 East, Moriarty, NM 87035. Call 505-832-5113 or email ranchoelisastablesfr@swcp.com

LET US MARKET YOUR LIVESTOCK. Live auction every Wednesday at 11 a.m. View online at dvauction.com, country bid or live auction. If you've got 'em, we'll sell 'em. Call 575-374-2505. fivestateslivestockauction@gmail.com

ORGANIC PLANT FOOD, 40 pounds worm casting with your bucket \$20., with my bucket \$25. or 100 worms for \$10. In Deming and Silver City area. Call 575-545-3704 for more information.

PURE BREED AKC GERMAN SHEPHERD PUPPIES. Ready for new home on May 22, 2022. Will have current shots and will have been dewormed. Males and females, large parents. Adoption fee. Call Sandra at 575-973-0073 for more information.

GREAT PYRENEES PUPS, born March 31, 2022. Mother is AKC registered, sire purebred LGD (a sheep protector). \$350. For pictures and more information, email: gypsydesigns@hotmail.com

Business

SUNSET SADDLES OFFERS CUSTOM LEATHERWORK; ie: saddles, chaps, chinks, holsters, belts, etc. Also saddle and tack repair. Located in La Luz, NM. Call 575-257-8874 or email: sunsetsaddles@yahoo.com

HEARING AIDS TOO EXPENSIVE? Do you qualify for help or low payments? If so, call the Hearing Aid helpline at 866-479-1519 or email www.careconnectusa.org

OFFICE/RETAIL SPACE FOR RENT. 1020 Lincoln Avenue in Las Vegas, NM, 1,500 sq. ft. with restroom and kitchenette. New paint and carpet. \$950. per month. Call 505-425-7578 ext. 122 for more information.

LOW STEP TILE SHOWERS BUILT ESPECIALLY FOR YOU! Mountainair and surrounding areas. Great prices, beautiful showers. Any tile, any pattern! Old School or Schluter System. In business since the late 1900's. Call 931-201-2791 for a free estimate, ask for Ed.

GEPPETTO'S INSTRUMENT HOSPITAL, repairs on anything with strings. Basket-cases, custom hand-built instruments, complete restorations, inlay work, bow-hairing, hand-drawn blueprints for your instrument. "Dreams Can Come True, Ask Geppetto!" Call Steve Reich at 575-802-5688 for more information.

WANTED, UNWANTED: broken, beaten, run-over, dog-bitten, smashed on shed wall, stepped on, basket-cases, bar room trauma, broken for known reasons or unknown reasons, fubared instruments, wooden or brass. Call Geppetto's Instrument Hospital at 575-802-5688. "The Work Speaks For Itself"

WANTED: NEW MEXICO WEAVINGS OF CHIMAYO DESIGNS IN VARIOUS SIZES AND COLORS, including 5x5, 10x10, 12x12, 12x8 and 12x18. Also interested in larger sizes. On-going need. Initial order 50 of each size. Contact Patrick Trujillo at 505-920-4793 for more information.

Equipment

GREAT OFFER ON SOLAR SUBMERSIBLE SHALLOW/DEEP WELL PUMPS! NRCS approved with two-year warranty on selected pumps with affordable, easy installation! For a custom quote, call 505-429-3093 or email us at solarwellpumpsonline@gmail.com, 24/7 service. Order online at our website: www.solarwellpumpsonline.com

FISHING TACKLE WANTED: "Antique" lures, reels, rods, tackle boxes. Pre-1950, please. Collector paying highest prices for "Grandpaw's" tackle box. Lures \$50 to \$5,000 each. Reels \$100 to \$7,500 each. Send photos to: tacklechaser@aol.com or call Rick at 575-354-0365.

DRINKING WATER STORAGE

TANKS, heavy-duty black poly, proven algae resistant. 125 to 11,000 gallons, NRCS and EQUIP approved. Please give us a chance to serve you! MasterCard or Visa accepted. Call 575-682-2308 or 1-800-603-8272.

OVERHEAD FEED BINS.

1 to 4 compartment, 12 to 48 tons. Any size free standing cattle guards, no footing needed. Dealer for T & S Feeders. Emery Welding, Clayton, New Mexico. Call 575-374-2320 or 575-207-7402. Email: eweld98@yahoo.com

IRRIGATION PIPE FOR SALE.

Good, used 8" and 10" PVC and aluminum pipe at discount prices. Also have, hydrants, valves, elbows, T's and plugs. Located in Taos and Pojoaque. Delivery available. Call Sierra at 575-770-8441 for more information.

EQUIPMENT FOR SALE: Cattle squeeze chute, good and ready to use, \$2,200. Small flat trailer, \$400. Cattle bulk feeder, 16 ft., tandem axle, \$2,500. In Alamogordo, call 575-430-1934 or 575-434-2221 for more information.

Great Finds

ROCK COLLECTION, AGATES FOR SALE, Botswana, Lake Superior, Laguna, Round Mountain, etc. Inquiries welcome. Will send pictures. Email: www.oldjonan@gmail.com

BUYING OLD STUFF: Gas pumps and parts 1960's or earlier, advertising signs, neon clocks, old car parts in original boxes, motor oil cans, license plate collections, Route 66 items, old metal road signs, odd and weird stuff. Fair prices paid. Have pickup, will travel. Gas Guy in Embudo, 505-852-2995.

6X6 STEEL SQUARE TUBING, 24' long. \$210. each. Total weight per stick is 800 lbs. No delivery. Pickup only. We will load Monday thru Friday, 8:00 am to 3:00 pm. Call 505-220-0767, for more information.

WANTED: NEW MEXICO MOTORCYCLE LICENSE PLATES

1912-1970. Paying \$100-\$500 each. Also buying NM car plates 1900-1923. Visit NMplates.com for history and 4,600 photographs of NM plates. Bill Johnston, Box 1, Organ, NM 88052-0001. Email: Bill@NMplates.com or call 575-382-7804.

FISHING TACKLE WANTED:

"Antique" lures, reels, rods, tackle boxes. Pre-1950, please. Collector paying highest prices for "Grandpaw's" tackle box. Lures \$50 to \$5,000 each. Reels \$100 to \$7,500 each. Send photos to: tacklechaser@aol.com or call Rick at 575-354-0365.

FOR SALE, NEAR GALLUP: 4-piece birdseye maple bedroom set, oak bed frame, several buffets. Wood working equipment: small router and table, Craftsman hollow chisel mortiser, large band saw. 1956 Buick super front grill. Zenith Transoceanic Radio circa 1950. Prices are negotiable and photos are available. Contact John at 505-905-0313 or at joyousjohn48@gmail.com

ROUGH RIDER ANTIQUES HAS MADE SOME EXCITING CHANGES SINCE YOUR LAST VISIT!

Dennis has added 4,000 Southwest books, beautifully organized. It is a bookstore within the store. Three new dealers are expanding our inventory as well. Return customers ask to talk to Mickey about coins and check out railroad items, old tools, license plates and signs. A big draw is jewelry: silver and turquoise from Indian Country; Mexican silver pieces from the 40's and 50's, estate jewelry and Martha's dazzling display of costume jewelry. Elise creates custom jewelry from shards of Fred Harvey china and silver. There's more: furniture, lamps, mirrors and art; linens, beads, sewing notions and small bags of things for artists and crafters. Open everyday at 501 Railroad in Las Vegas, across from the Castañeda, a Fred Harvey hotel. Bring the truck! 505-454-8063.

BEEF, PORK AND PIGS FOR SALE!

Healthy for you and the earth! Local beef, grass finished. By the cut or 1/4 bundles, \$7.50 per pound quarter. Also, farm raised pork or buy weaned castrated piglets and raise your own! \$80. each. In Las Vegas, call 505-426-4892 or email: redbarnranch599@gmail.com

RAILROAD ITEMS WANTED:

Kerosene lanterns, brass locks, keys, badges, uniforms, bells, whistles, and pre-1950 employee timetables. Always seeking items from any early New Mexico railroad, especially D&RG, C&S, EP&NE, EP&SW, AT&SF, SP or Rock Island. Call Randy Dunson at 575-760-3341 or 575-356-6919.

HEADSTONES (I.E. CEMETERY MONUMENTS)

is our business. Over 1,000 designs. An eternal memory of a loved one. **TAOS MOUNTAIN HERITAGE.** Call 575-770-2507 or Email: taos_mt_heritage@msn.com Website: www.taosmountainheritage.com

Real Estate

2 MOUNTAIN CABINS, 25+

acres at 8,000 feet, Wildhorse Ranch Subdivision, Pie Town, NM. Well on stream with 5,000 storage tank and fire hydrant. New Mexico Hunting unit 13. To view this property, go to: <https://fsbo.com/listings/listings/show/id/520104/>

CONCHAS, 0 AND 00 RIDGE

DRIVE. Two tracts with two lots per each property (lots are 100 x 100 or .23 acre). Each tract has a permitted septic that has never been used. Electricity and co-op water nearby. \$45,000 per tract. Big Mesa Realty, 575-456-2000. Paul Stout, broker, NMREL 17843, 575-760-5461. www.bigmesarealty.com

CUERVO, 0 MESITA PASS ROAD, MESITA RANCH SUBDIVISION, SALE PENDING, 148 acres.

Beautiful mesa views, perfect for horses and/or livestock. \$8,500. Big Mesa Realty, 575-456-2000. Paul Stout, broker, NMREL 17843, 575-760-5461. www.bigmesarealty.com

NOGAL, TBD BARBER AVENUE, SOLD, 2.89 acres in Town of Nogal. Co-op water and electricity nearby. \$45,000. Big Mesa Realty, 575-456-2000. Paul Stout, broker, NMREL 17843, 575-760-5461. **SOLD**
www.bigmesarealty.com

SUMNER LAKE, 0 RIVER RANCHES ROAD, (at intersection with State Road 203). Lot just over 20 acres. Scenic views, just west of lake. \$18,000. Big Mesa Realty, 575-456-2000. Paul Stout, broker, NMREL 17843, 575-760-5461. www.bigmesarealty.com

DATIL, HERRINGTON CANYON ROAD. Three properties, one east (40 acres) and two west/northwest (44 and 40 acres) vacant land. Starting at \$24,000. Big Mesa Realty, 575-456-2000. Paul Stout, broker, NMREL 17843, 575-760-5461. www.bigmesarealty.com

PIE TOWN, SOUTH OF WILD HORSE SUBDIVISION. Two tracts with closest access from Goat Ranch Road. One is 20 acres for \$12,000. and one is 40 acres for \$24,000. Vacant land. Big Mesa Realty, 575-456-2000. Paul Stout, broker, NMREL 17843, 575-760-5461. www.bigmesarealty.com

NEW MEXICO LANDOWNERS, LET US SELL YOUR WORKING FARM OR RANCH. Broker has a lifetime of experience working on a family farm in New Mexico and has been a family farm owner and operator since 1988. Big Mesa Realty, 575-456-2000. Paul Stout, broker, NMREL 17843, 575-760-5461. www.bigmesarealty.com

CURRY, ROOSEVELT AND QUAY COUNTIES, CLOVIS, PORTALES AND TUCUMCARI, let us sell your farms, ranches, city residential and commercial properties. Broker is a life resident of Curry County and Clovis native. Big Mesa Realty, 575-456-2000. Paul Stout, broker, NMREL 17843, 575-760-5461. www.bigmesarealty.com

FENCE LAKE, 295 PINE HILL ROAD, BACK ON THE MARKET, MOTIVATED SELLER, 2-bedroom, 3-bathroom home on just over 60 acres, well, outbuildings, corrals, abundant wildlife and scenic views. NEW SEPTIC SYSTEM. \$250,000. Big Mesa Realty, 575-456-2000. Paul Stout, broker, NMREL 17843, 575-760-5461. www.bigmesarealty.com

TUCUMCARI - WEST OF UTE LAKE. East of Quay Road Al. Seven 40 acre (more or less) parcels with lake and mesalands views. One of the seven lots is west of Quay Road Al fronting Ute Lake. Call for appointment to show and pricing. Big Mesa Realty, 575-456-2000. Paul Stout, broker, NMREL 17843, 575-760-5461. www.bigmesarealty.com

CONCHAS, 204 CONCHAS PLACE, 2-bedroom, 2-bath home with great views of the lake. Upper level has kitchen and deck. Tall carport for RV or boat. Two car garage. \$189,000. Big Mesa Realty, 575-456-2000, Paul Stout, broker, NMREL 17843, 575-760-5461. www.bigmesarealty.com

DATIL, 40 ACRE TRACT EAST OF CRISWELL ROAD (Forest Road 6A) and a 40 acre tract East of Red Feather Tank Road (off Criswell Road). Vacant land. Starting at \$24,000. Big Mesa Realty, 575-456-2000, Paul Stout, broker, NMREL 17843, 575-760-5461. www.bigmesarealty.com

TUCUMCARI, 1120 S. SARATOGA, 1.5 acres fronting US 54 (Mountain Road). \$20,000. Big Mesa Realty, 575-456-2000, Paul Stout, broker, NMREL 17843, 575-760-5461. www.bigmesarealty.com

PORTALES/ARCH, 1884 STATE ROAD 88, 3-bedroom, 4-bath home on just over one acre. Attached carport. Two wells. \$230,000. Big Mesa Realty, 575-456-2000, Paul Stout, broker, NMREL 17843, 575-760-5461. www.bigmesarealty.com

CLOVIS, 809 S. PRINCE. Vacant land just under five acres south of intersection of Brady and Prince. Commercial. \$200,000. Big Mesa Realty, 575-456-2000, Paul Stout, broker, NMREL 17843, 575-760-5461. www.bigmesarealty.com

To Place a Classified Ad

1. Visit www.enchantment.coop/classifieds and complete form. You will be contacted by email with price and to pay by credit card (5% processing fee).
2. Or, complete form and select category.
3. Write ad on another sheet of paper.
4. Price: \$20 up to first 40 words per ad, per category, per month. After 40 words, each word is 50 cents. Add \$5 for small graphics such as cattle brands. Phone numbers, emails and websites count as one word.

To Send and Pay Your Classified Ad

1. Mail ad and payment (**Payable to NMRECA**) NMRECA • enchantment 614 Don Gaspar Ave. Santa Fe, NM 87505

Deadline

1. **Due the 7th, one month prior.**
Ex: Ads due June 7 for the July issue.

Good to Know

1. Only members of New Mexico electric cooperatives may place ads.
2. We reserve the right to reject any ad.
4. Advertisements in enchantment are paid solicitations and are not endorsed by the publisher or the electric cooperatives of New Mexico.
5. PRODUCT SATISFACTION AND DELIVERY RESPONSIBILITY LIE SOLELY WITH THE ADVERTISER.

Questions

1. Call: 505-982-4671 or
2. Email: enchantment@nmelectric.coop

Name: _____
Address: _____
City: _____
State: _____ ZIP: _____
Phone: _____
Cooperative: _____

Select Category Below

- | | |
|------------------------------------|--------------------------------------|
| <input type="checkbox"/> Animals | <input type="checkbox"/> Great Finds |
| <input type="checkbox"/> Business | <input type="checkbox"/> Real Estate |
| <input type="checkbox"/> Equipment | <input type="checkbox"/> Vehicles |

SANTA ROSA, 0000 WILL ROGERS DRIVE, 26 acres close to I-40 and old Route 66. Commercial potential. \$450,000. Big Mesa Realty, 575-456-2000, Paul Stout, broker, NMREL 17843, 575-760-5461. www.bigmesarealty.com

SANTA ROSA, 0 EAST OF LOS TANOS CREEK, Hollywood Ranch Subdivision. Ten acres with great views of surrounding mesalands. \$10,000. Big Mesa Realty, 575-456-2000, Paul Stout, broker, NMREL 17843, 575-760-5461. www.bigmesarealty.com

SAN MARCIAL, 27A WINCHESTER ROAD, Willow Springs Ranch Subdivision, 432 acres in the foothills of the Chupadera Mountains. Close to I-25. \$390,000. Big Mesa Realty, 575-456-2000, Paul Stout, broker, NMREL 17843, 575-760-5461. www.bigmesarealty.com

TWO 80' TIERED LEVEL LOTS IN CLOUDCROFT. Upper lot, \$95,000. and lower lot, \$90,000. Electricity, water and sewer at property's edge. Lots are 140 yards from center of town. Good for cabin, mobile home or RV parking. Village maintained road. Call 915-479-0522 for more information.

SUMNER LAKE, 225 INDIAN PLACE, SALE PENDING, 3-bd home, 2-bath home on 20 acres with incredible view of Pecos River Valley. Custom built. \$230,000. Big Mesa Realty, 575-456-2000, Paul Stout, broker, NMREL 17843, 575-760-5461. www.bigmesarealty.com

WATER DOWSING AND CONSULTING, 46 years of experience. Proven success. In Lincoln County, will travel. Call Elliot Topper at 575-937-2722 for more information.

DATIL, 31 OLD HIGHWAY 60, 2-bedroom, 1-bath home on 1/2 acre. Potential for rental/hunting cabin, \$47,000. Big Mesa Realty, 575-456-2000, Paul Stout, broker, NMREL 17843, 575-760-5461. www.bigmesarealty.com

DATIL, COYOTE TRAIL, BLUEBIRD ROAD AND SUGARLOAF TRAIL. Sugarloaf Mountain Subdivision. (SOLD, LOTS 241, 268, 269 and 273). Choice of eight lots just over five acres each. \$12,500. per lot. Big Mesa Realty, 575-456-2000, Paul Stout, broker, NMREL 17843, 575-760-5461. www.bigmesarealty.com

FOR SALE VACANT LAND IN EDGEWOOD, BERNALILLO COUNTY, located near I-40 and Mountain Valley, 2 1/2 surveyed acres. Fully fenced, great views, electricity on site and coop water available. \$50,000. Call 505-250-4489 or 505-301-0096 for more information.

MILAGRO, 0000 PECOS SPUR, PORTRILLO CREEK RANCH SUBDIVISION, 164 acres. Wide open space for livestock and/or homesite. Close to I-40. \$94,000. Big Mesa Realty, 575-456-2000, Paul Stout, broker, NMREL 17843, 575-760-5461. www.bigmesarealty.com

SANTA ROSA, 1070 BAR Y ROAD, Hollywood Ranch Subdivision. Three parcels (18, 19, 20) totaling just over 41 acres. Perimeter fencing and road. Water and electricity, \$220,000. Big Mesa Realty, 575-456-2000, Paul Stout, broker, NMREL 17843, 575-760-5461. www.bigmesarealty.com

FOR SALE IN PECOS, NM, 14 x 70 CHATT, 1979 MOBILE HOME. Good interior and roof. Lots of kitchen cabinets. Upstairs master bedroom and bathroom. Smaller bedroom, shower and bathroom. Includes washer, dryer, refrigerator and dishwasher. Good ranch house. \$15,000. Needs to be moved, has four axles. Will provide paint for exterior. Call 505-470-6247 or 505-471-6957 for more information.

DREAM RANCH FOR SALE, 15 minutes out of Lovington, NM. Unique log house with endless agricultural possibilities. For more information and to view go to: <https://apps.realtor.com/mUAZ/fjakd6xu>

FOR SALE OR LEASE BY OWNER, MULTI-LEVEL HOME IN PUNTA DE AGUA, NM, with garage on three lots with good fence. Nice view of sunrise. Call 505-847-0544 for more information.

TUCUMCARI HOME ON NINE PLUS ACRES, 3-bedroom, 2-bath doublewide with metal roof, fenced yard with fruit trees. Property fenced with corrals, barn, two shops, carport and greenhouse. Call 575-799-6336 for more information.

UNION, HARDING AND COLFAX COUNTIES, LET US SELL YOUR FARMS, RANCHES AND TOWN PROPERTIES. Big Mesa Realty, 575-456-2000, Paul Stout, broker, NMREL 17843, 575-760-5461. www.bigmesarealty.com

Vehicles

CAR PARTS FOR SALE: 1955

Chevrolet rear bumpers, heater controls, chrome headlight bezels, taillight bezels and lens, no fenders or hood. 1934 Ford, three window coupe parts, one complete hood, front and rear bumpers with brackets. Two Model-T pickup beds. One complete 1936 pickup bed, rolling. 1958 Chevrolet Impala, one hood bar and extension kit, park light pods. 1940 Ford, four door deluxe complete car, not running. Call 575-770-3589 any evening from 6pm till 10pm. In Taos, NM.

CAMP TRAILER 2003 KZ, 23 ft., with one slide out. Comes with mounted TV and radio player, hitch and sway bars. Self contained shower/tub combo, AC, LP hot water heater, LP or electric refrigerator. Very good condition. \$7,500. or best offer. In Alamogordo, call 575-430-8430 or 575-430-1934 for more information.

youth art

July's Topic:

How do you celebrate July 4?
Draw your celebration
with family and friends.

August's Topic:

August 7 is friendship day. Draw
you and a friend having fun.

Send Your Drawing

By mail: Youth Editor
614 Don Gaspar Ave.
Santa Fe, NM 87505

By email:
enchantment@nmelectric.coop

Deadline: Submit by the
9th, one month prior to
publication.

Hooray! Winners Get Paid: \$15

Have a Youth Art Topic?

Email or mail to the
addresses above, or call
505-982-4671.

**5 items to include on the
back of your drawing,
otherwise YOU ARE
DISQUALIFIED:**

1. Name
2. Age
3. Mailing Address
4. Phone
5. Electric Co-op

*Accepted artwork up to age 13.

DON'T FORGET THESE ITEMS!

Enjoying the Belmont Stakes! Congratulations to the Winners!

Tatiana Ledezma • Age 7
Central Valley Electric Cooperative



Gage Hamrick • Age 9
Otero County Electric Cooperative



Gabriel Nunez • Age 6
Central New Mexico Electric Cooperative



Noah Saavedra • Age 9
Continental Divide



Kaydence Hamrick • Age 12
Otero County Electric Cooperative



Azariah Wright • Age 10
Jemez Mountains Electric Cooperative





THE TRUSTED CHOICE SINCE 1976!

**We stock the area's largest supply of
all things pertaining to water!**

- Solar well systems
- Plumbing fittings
- Water storage tanks
- Pressure tanks
- Full septic systems
- Poly pipe
- PVC pipe
- Fencing supplies

**We are proud to serve our local
community and provide cost-effective
solutions for any water or well project.**

**On behalf of everyone at Williams
Windmill, we want to thank all our
customers for their patronage and look
forward to serving the Southwest for
many more years to come!**

**Exit 156 • Frontage Rd • Lemitar NM
(575) 835-1630 williamswindmill.com**

Order an
enchantment
gift subscription today

1 Year: \$12 or 2 Years: \$18

Mail payment payable to
NMRECA with mailing details of
person receiving subscription:

Mail to:
enchantment
614 Don Gaspar Ave.
Santa Fe, NM 87505



THE RIDE OF YOUR LIFE.

Steal away a day on the award-winning, historic Cumbres & Toltec Scenic Railroad. Climb aboard and leave your worries behind. From the open air gondola to the breathtaking views from your private window, this is a scenic train ride unlike any other. Join us for a day trip through the unspoiled Rocky Mountain West. Vibrant and beautiful as always. Depart from Antonito, Colorado or Chama, New Mexico. The modern world can wait while you take the ride of a lifetime.

BOOK NOW AT CUMBRESTOLTEC.COM 1-888-286-2737



Cumbres & Toltec
AMERICA'S MOST HISTORIC SCENIC RAILROAD

**For the Members of Roosevelt
County Electric Cooperative**



A Touchstone Energy® Cooperative 

Advertising in

enchantment

Advertising in **enchantment** is both effective and a great value. We can accommodate just about any display ad size, and significant discounts apply for multi-edition and larger ad buys. **enchantment** is distributed monthly to more than 113,000 homes and businesses covering about 80% of the state's landmass. Independent reader research estimates monthly readership of more than 339,000.

The **enchantment** digital edition extends its reach of the magazine.

Ad Size	Annual Frequency			
	1x	3x	6x	12x
		5% Disc.	10% Disc.	20% Disc.
Full Page	\$2,860	\$2,720	\$2,575	\$2,290
1/2 Page	\$1,495	\$1,420	\$1,345	\$1,200
1/3 Page	\$1,040	\$990	\$940	\$835
1/6 Page	\$550	\$525	\$495	\$440
Col. Inch	\$120	\$115	\$110	\$95



enchantment also uses Facebook to further the reach of local display advertisers. If interested, please email: enchantmentads@nmelectric.coop for more details.